



**ASX: HETH**



# A currency-hedged portfolio of global sustainability leaders in one ASX trade

The Betashares Global Sustainability Leaders ETF - Currency Hedged (ASX: HETH) provides exposure<sup>1</sup> to a diversified portfolio of sustainable, global ethical companies, hedged for currency exposure.



## A TRUE TO LABEL ETHICAL SOLUTION

HETH combines positive climate leadership criteria with a broad set of ESG screens, offering investors a true to label ethical investment solution, for global equities exposure.



## INDUSTRY CERTIFIED

In one simple ASX trade, investors gain exposure to a diversified portfolio of ethical Australian companies. HETH has been certified as meeting the Australasian Responsible Investment Standard by the Responsible Investment Association Australasia (RIAA)\*.



## CURRENCY-HEDGED

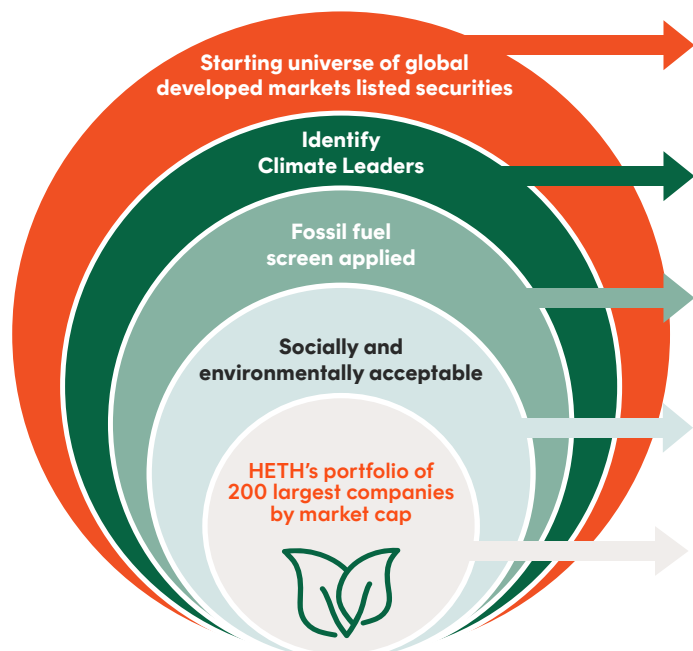
HETH is currency-hedged to the Australian Dollar, which seeks to minimise the effect of currency fluctuations on returns.



## COST-EFFECTIVE

HETH tracks the performance of an index, so there are no 'active manager' fees.

### The screening process for HETH



- Must meet minimum market cap and liquidity requirements.
- Climate leaders are identified as companies in the top one-third in carbon efficiency in their industry, or are engaged in activities that can help reduce carbon emission by other industries.
- Removes companies with direct or material indirect (i.e. products, services, finance, or insurance) involvement in the fossil fuels industry, and those with particularly high use of fossil fuels.
- Excludes companies that are materially engaged in activities deemed to be inconsistent with ESG investment objectives (e.g. gambling, tobacco, armaments, junk foods, human rights).\*\*
- HETH's portfolio of ethically-screened large global stocks identified as 'Climate Leaders'.

\*\*Screens listed above are not exhaustive and may include materiality thresholds. For a detailed list of screens and relevant thresholds, see the Product Disclosure Statement.

### Buy and sell like any share on the ASX using the code: HETH

<sup>1</sup>HETH currently obtains its investment exposure by investing in the Betashares Global Sustainability Leaders ETF.

\*The RIAA is the largest and most active network of people and organisations engaged in responsible, ethical and impact investing across Australia and New Zealand.

HETH has been certified by the RIAA according to the strict operational and disclosure practices required under the Responsible Investment Certification Program. See [www.responsibleinvestment.org](http://www.responsibleinvestment.org) for details. The Responsible Investment Certification Program does not constitute financial product advice. Neither the Certification Symbol nor RIAA recommends to any person that any financial product is a suitable investment or that returns are guaranteed. Appropriate professional advice should be sought prior to making an investment decision. RIAA does not hold an Australian Financial Services Licence.

Betashares Capital Ltd (ABN 78 139 566 868 AFS Licence 341181) is the issuer. Read the Target Market Determination and PDS at [www.betashares.com.au](http://www.betashares.com.au) and consider with your financial adviser whether the product is appropriate for your circumstances. The value of the units may go down as well as up.

Investment risks include market risk, international investment risk, non-traditional index methodology risk and currency hedging risk. For more information on risks and other features of the Fund, please see the Product Disclosure Statement.